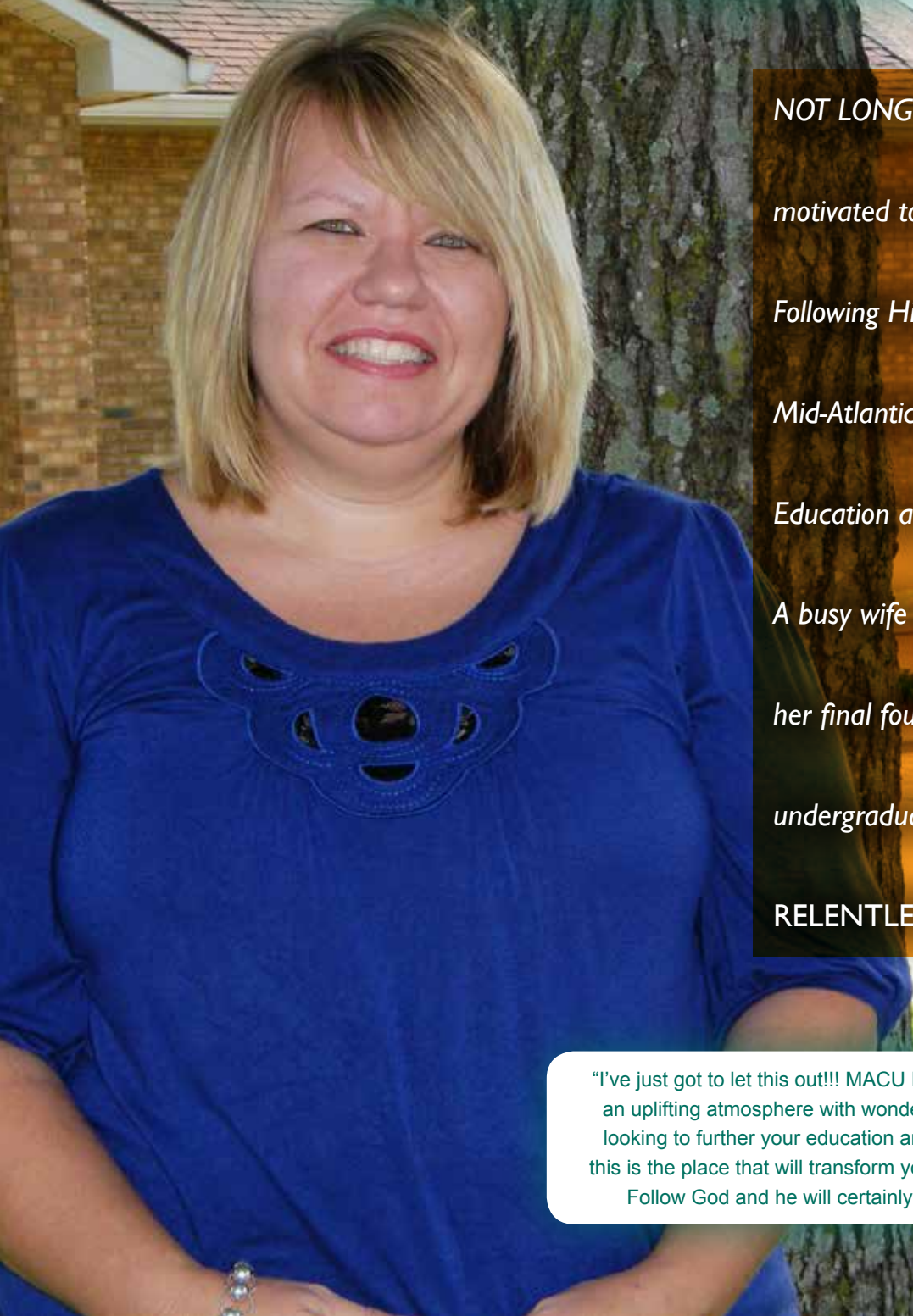


MOTIVATED



NOT LONG AGO Crystal Lamb was

motivated to give her life fully to Christ.

Following His call led her to enroll at

Mid-Atlantic to pursue Elementary

Education and Counseling and Psychology.

A busy wife and mother, Crystal is in

her final four semesters of study for her

undergraduate degree.

RELENTLESS. MOTIVATED.

"I've just got to let this out!!! MACU IS AWESOME!!! This campus has such an uplifting atmosphere with wonderful loving people!! To those seriously looking to further your education and letting God use you in mighty ways this is the place that will transform your life forever to help and bless others! Follow God and he will certainly lead!! #lovemacu" — Crystal Lamb



MOMENTUM

Momentum: the strength or force that allows something to continue or to grow stronger or faster as time passes

SIXTY-SEVENTH YEAR. GROWING STRONGER AS time passes. Mid-Atlantic Christian University is in her 67th year of preparing servant-leaders to serve in the church and in the marketplace. Our legacy is rich, and our future is bright. God is doing amazing things. We are growing stronger and moving faster.

This year MACU has the largest student body ever – 199, up 21 percent from last fall.


This year MACU has been ranked 17th (up from 40th last year) by *Washington Monthly* in the top 100 baccalaureate schools in the nation. (Story, Page 6)

This year MACU, as always, continues to train preachers, missionaries, and youth ministers to join the 75% of our male graduates who are vocational ministers.

This year MACU is undergoing her ten-year accreditation reaffirmation with SACSCOC* and working on a Quality Enhancement Plan in line with our mission called “Connecting Cultures: A Global Awareness Plan.”

This year the student body is excited, united, serving, growing intellectually and spiritually, and being transformed by the power of the Gospel.

In the book of Acts, we read that the church began on Pentecost as 3,000 people responded to the Gospel. The Holy Spirit inspired a generation to follow Christ, and as they did, a great momentum caused the faithful to proclaim Jesus in the synagogue, in homes, and in the marketplace. Soon, Luke lost track of the math and said that the number of disciples was multiplying daily. In Acts 17:6 we read: “These men who have turned the world upside down have come here too.” That’s momentum!

God is moving! God is moving at MACU, and God is moving in the church. The momentum is building. I invite you to get onboard as we partner together to impact the world by transforming ordinary people into extraordinary Christian leaders. 



Serving those who serve,

Clay

D. Clay Perkins, Ph.D. • President



NEW STUDENTS ATTENDING ORIENTATION FAMILY BANQUET AUG. 15. Front: Seated on ground – Jenilyn Stanton, Jackson Osebreh, Kate Vere, Meghan Lee, Noah Kight, Matt Cooper, Alex Wang, Micah Scorsone, Micah Ryals, James Figgs. Second: Seated – Emily O’Connor, Caitlin O’Connor, Paige Morse, Kelly Anders, Fiona Allain, Thais da Costa Uejo, Hanna Swain, Amanda Strong, Abby Crouse, Khadijah Hedgepeth. Third: Standing – Emily Beamon, Emily Greene, Lea Chapman, Kristyn Carter, Whitley Davis, Louise Spry, Destini Parker, Will Artis, Markus Holley, Jameson Lowery, Emily Little, Pamela Wiley, Whitney Rowe, Olivia Maxey. Back: Alex Whitley, Jennifer Wiley, T.J. Martin, Marquice Sims, David Rimarski, Payton Cavallo, Nicholas Godley, Dominic Chasse, Cruz Rueda, Jason Wells, Savanna Bannerman, James Matthews.

Student Services, Enrollment on the Move

STUDENT SERVICES




Ken Greene
Vice President for Student Services

$P=mv$ OR MOMENTUM = MASS multiplied by velocity.

A simplistic explanation is that momentum occurs and brings change as external forces have an impact on another object. There is great momentum and excitement in the student body this fall. Forces from two areas – student life and recruiting – have converged to create a fall enrollment notably higher than last fall’s.

The Student Life Department, in cooperation with faculty, focused on techniques to improve freshman success, including tutors, faculty mentorship, and ever-changing student needs.

The Enrollment Services Department visited over 150 high school college fairs, increased Christ in Youth (CIY) involvement, emphasized personal relationships, increased scholarships, and emphasized early acceptance. Fall and spring College Preview events brought numerous students on campus, as did the Tuesday Tour program. A recruitment-driven web design also increased recruitment efforts, as did expanded options for student athletes. 

ENROLLMENT




Dan Smith
Enrollment Director

BOTH QUALITY AND QUANTITY CHARACTERIZE this fall’s incoming freshman class

and transfer students, who come from as far away as Brazil, Ghana, and Myanmar. The majority of the new students call North Carolina home, but some of the far-flung home states include New York, Ohio, Florida, and Georgia.

Sunday Night Live! was back in action with a visit from professional skateboarder Tim Byrne in August and an awesome time of worship led by the campus band. On November 2 renowned comedians and youth ministers Bean & Bailey will be the SNL! guests. The final SNL! on campus this school year is on January 18, followed by MACU’s MLK Day of Service on Monday, January 19. All SNL! worship events begin at 5:00 p.m. and end at 7:00 p.m. Please join us for each of these worship and service opportunities. Encourage your youth minister to join us as we strive to encourage high school students in their walk with Jesus. Details are available on Facebook and at www.macuniversity.edu.

Please pray for the Enrollment Team this fall as they participate in nearly 600 college fairs from September to November in both public and private high schools and convention centers in North Carolina, South Carolina, Virginia, Georgia, and Delaware. Let’s keep the momentum! 

ENROLLMENT FALL 2014	
Headcount	199 (up 21%)
FTE	172 (up 18%)
Men	79
Women	120
Full Time	149
Part Time	47
Audit	3
New Students	69
School of Undergrad. Studies	169
School of Professional Studies	30



Brittany Meinsen (left) joined the Admissions team this fall. With her is Abby Evans, who stopped by the MACU table when Brittany represented the university at a college fair in Delaware. Admissions team members will participate in about 600 fairs this fall.

Three International Students Enroll

MEETING THE CLASS OF 2018 must include meeting three from overseas. While longer introductions will follow, for now we present Si Li Yet, Jackson, and Thais.



Si Li Yet
Myanmar

Si Li Yet comes from our sister school in Thailand, Maesot Biblical Training Center (MBTC). MBTC is part of Good News Mission in Southeast Asia, a work founded by Ezekiel Fish '90. When Si Li Yet returns, he will run five Bible colleges in Northern Myanmar, which will be training preachers and church leaders for several countries. He is enrolled in the Bachelor of Theology program.



Jackson Osebreh
Ghana

Jackson follows in the steps of an older brother, Attah, who graduated from MACU in 2013. Attah and his wife, Jessica (daughter of Jeff '83 and Sherrie ex'84 Hostetter), are in ministry in Ghana. Jackson plans to get a degree in general ministry and nursing. He said, “I will return to Ghana and focus on ministering to the youth. If need be, I will travel to different parts of Ghana to help in mission clinics. That is my current plan, but if God has something else in mind I’m more than willing to accept it.”



Thais da Costa Uejo
Brazil

Thais came to the United States to work as a nanny. While here, she decided to advance her education and enrolled in College of the Albemarle, a community college a mile from campus. When she visited our campus with a friend, she found a warmth that she desired. She enrolled here and plans to return to Brazil to teach in schools and in the church. Her desire is to help the people of her homeland with education and with knowledge of the Lord. 



“What is the Most Accurate Version?” Dr. Fields

SOMEONE RECENTLY ASKED ME WHICH OF FOUR

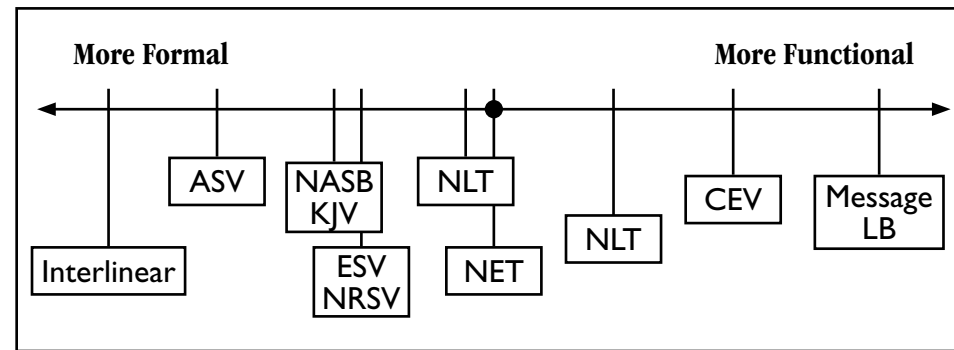
well-known versions was most accurate. To answer, we need to remember four things.

First, all these translations are well done, but each has strengths and weaknesses.

Second, translations must be categorized on a continuum from formal (what people sometimes call “literal”) to functional. Formal translations try to retain as much as possible the grammatical form of the original language. Functional translations try to render the sense or meaning in the way that is clearest in the second language.

Above is a diagram of such a continuum and how I would locate the translations, about which I was originally asked, plus others. Some less well-known versions are abbreviated as follows: ASV = American Standard Version (1901), NET = New English Translation, NLT = New Living Translation, CEV = Common English Version. The Message and the Living Bible (LB) are paraphrases.

Third, I suggest that people who are familiar with the original languages or who want to study the details of the text choose the formal transla-



tions. Those who are not very familiar with the original languages or who want rapid comprehension should choose the functional.

Fourth, “accuracy” is not as precise a term as we might hope. By it some mean more accurate with respect to matching the grammar and syntax of the original language (“more formal”). Others mean more accurate with respect to matching the author’s intended meaning of the original document (“more functional”).

A translator’s goal is to produce a translation that is clear, accurate (usually with respect to both form and function), natural, and literary. Quite a balancing act!

So, which version is most accurate? It depends on the need. In English, we have the benefit of multiple translations which can allow us to meet different purposes. For detailed study and mature readers, I recommend those on the left side of the dot. For devotional reading and more elementary readers, I recommend those on the right side of the dot. For everyone, I recommend comparing versions. When you encounter significant differences, find someone who knows the original language to help you understand why. There is value in both sides!

Dr. Fields' monthly blog: <http://bit.ly/hebrewforyou>

IMMERSED IN LANGUAGE

Summer 2014 Hebrew and Greek at MACU

THEY CAME TO CAMPUS WITH many languages. They left campus with much greater skills in Biblical Hebrew or Greek. In mid-summer MACU welcomed students from South Africa, China, Hong Kong, and Switzerland, as well as many states, who came to study Biblical languages. Their response to the intense language study was enthusiastic. One student who came knowing no Hebrew was amazed that after three weeks she was understanding, speaking, reading, and writing Biblical Hebrew.

There is no better way to get in contact with the literature of the Bible than to know the biblical languages. MACU hosted Dr. Randall Buth and the Biblical Language Center (BLC) for four-week intensive courses in beginning Hebrew and Greek from June 23-July 18. Each course was the equivalent to one year in either Greek or Hebrew. Dr. Lee Fields directed the program.

The Hebrew course was taught by Ben Kantor of Austin, TX, and Scott McQuinn of Fresno, CA. Dr. Buth and Dr. Fields taught the Greek course.

Buth, formerly with Wycliffe Bible Translators, founded the BLC in Israel, where he lives with his wife, Margaret. He has developed innovative teaching and learning materials that enable students to learn ancient Greek and Hebrew in the same way they learned their native language: understanding and speaking before reading and writing.

Dr. Fields converted to this method of teaching in 2007 when he participated in the Cohelet Project (<https://sites.google.com/a/ashland.edu/cohelet/the-project-1>). Since then he has studied Hebrew in Israel at the BLC and has attended BLC Greek teacher workshops at Fresno Pacific University over three summers.

Greek and Hebrew students begin by understanding and obeying commands. Soon they are



Above: Students in the Hebrew course perform the story of Jonah in Hebrew.



Left: Students on campus this summer studying Hebrew and Greek with the Biblical Language Center. Their teachers were Randall Buth (top far right wearing hat), Lee Fields (second row, far left), Ben Kantor (back row, far left), and Scott McQuinn (front, far right).

acting out stories and speaking. One of the class rules for language learning is “Wear clothing that allows for comfortable (and modest) movement from floor to ceiling.” MACU has supported Dr. Fields in this communicative approach. The classroom is now a miniature city with a city gate and ancient-style house with hundreds of props to use in class.

Why learn to speak “dead” languages? (1) Studies show that readers must be able to hear and speak in order to produce an operating verbal working memory, which allows readers to think in the language, which in turn produces true reading comprehension. (2) All students can learn Greek and Hebrew in this way. (3) Students retain the language because it gets “inside” of them. (4) Students have fun!

From Jordan To Jerusalem

THE 2014 MACU HOLY LAND tour scaled back given concerns regarding security in the region, but some adventurers still wanted to go. The comforts of the

large packaged tour were sacrificed, but Glenda Scudder, Matthew Smith, and Donna Van Winkle arrived in Jordan on July 1. Dr. Robert Smith met them and served as their chauffeur and guide for four days in Jordan and eight days in Israel. Dr. Smith is Professor of Bible and History and Chair of the Department of Arts and Sciences.

In Jordan, the group made the famous mosaic city of Madaba their hub. In the picture above the group is standing beside the rolling stone doorway to a monastery at Mt. Nebo. From there, like Moses, they could look into the land of promise. Descending from that height into the Great Rift Valley, the group crossed the River Jordan into Israeli-controlled territory at the King Hussein Bridge. For four nights in Galilee they stayed in the Casa Nova, a small hotel on the shoreline promenade of Tiberius. Each day they made excursions to sites like Nazareth, Cana, Capernaum, and Caesarea Philippi. Moving south, they explored Masada, Qumran and swam in the Dead Sea before settling into a small hotel in Arab East Jerusalem just walking distance from the Old City. Day tours from this southern hub went to Bethlehem, Herodion, and Emmaus.

While the group heard some explosions in the distance some nights, they kept away from troubles associated with the conflict in Gaza. The group returned to Jordan and took a day trip to Petra and Shaubak Castle before departing for the United States on July 13. Glenda Scudder, who took thousands of pictures, is still working on her picture book. She says, “I am glad I took pictures of all the signs. It helps me keep all the sites straight. We saw so much!” Matthew Smith, a ministry student from Indiana observed, “Our Holy Land trip helps make Biblical history real. It burst to life for me.”



Waddell Addresses Convention



DR. GREG WADDELL, DIRECTOR OF Online Education, spoke for the Convencion Nacional Cristiana, which took place in Houston,

TX, July 15-17. The convention is a national gathering for Spanish-speaking Christians in the Restoration Movement churches. As the main speaker for the Wednesday night main session, he spoke (in Spanish) about the Church as a Living Body. Dr. Waddell and his wife, Dawn, served as missionaries for 21 years in Uruguay and Argentina.


Mid-Atlantic Ranked 17th Among Top 100 Baccalaureate Colleges in Nation

MID-ATLANTIC CHRISTIAN UNIVERSITY HAS BEEN ranked 17th in the 2014 *Washington Monthly's* list of college rankings. The *Washington Monthly* notes that its ranking is different from other college rankings. They state: "Our rankings aim to identify institutions that are acting on behalf of the true public interest." The rankings are based on three factors. The first is social mobility, which gives colleges credit for enrolling many low-income students and helping them earn degrees. The second recognizes research production, particularly at schools whose undergraduates go on to earn PhDs. The third values a college's commitment to service and involvement in the greater community.

Now in her sixty-seventh year, Mid-Atlantic and her alumni have made an impact around the world. Graduates serve in 46 states, 1 territory, and 25 countries. The university values integrity, compassion, and service. Faculty and staff, as well as students, model those values in the campus

community. MACU exists to impact the world by transforming ordinary people into extraordinary Christian leaders. John Maurice, Vice President for Institutional Advancement, said, "Those who would lead must first learn how to serve."

Mid-Atlantic's president, Dr. Clay Perkins, noted, "At Mid-Atlantic we educate ministers. Many will serve in churches. Many will serve in the marketplace. But all serve. At graduation all graduates are given a towel to remind them to be servant leaders, as modeled by Jesus Christ. We are honored to be acknowledged for our service to others."

MACU believes in the intrinsic value of every student. The university is committed to helping all, regardless of income and status, to receive a high quality faith-based education that prepares them for service in the marketplace or in the church. We are pleased to be recognized by *Washington Monthly* for the third year in a row as an institution that is genuinely acting in the public interest. 

Taking the Word to the World

Mobilized Assistance Supporting Translation

ON MAY 29, 2014, MACU professors Dr. Lee Fields, Chairman of the Department of Biblical Studies and Professor of Bible, and Dr. Cheryl Luton, Director of Teacher Education and Assistant Professor of Elementary Education, along with Dr. Luton's husband, Dr. John Luton, Professor of Communication at Elizabeth City State University, joined a team of Wycliffe Associates (WA) volunteers in Kathmandu, Nepal to launch a pilot program called MAST—Mobilized Assistance Supporting Translation. The program was

designed to assist national Bible translators.

Dr. Fields taught a class that teaches the translators how to use LOGOS, a digital library application designed specifically for electronic Bible study. Fields also prepared a course of Greek instruction for the translators. Dr. John Luton, a Bible Translation Consultant with Wycliffe Associates, taught a course in translation principles. Dr. Cheryl Luton taught a course in drafting, which also incorporated translation skills. Additional courses in peer-editing and

problem solving were added by other volunteers who provided a total of six hours of instruction each day for two weeks.

The first two weeks of MAST were rigorous with worship beginning each day at 8:30 and teams of translators rotating through six one-hour classes daily until 5 p.m. Nepali translators were eager to learn and, despite the hot and humid days, they were faithful in attendance and effort.

During week three, the WA volunteers guided the drafting of the Bible trans-



DATES & EVENTS


- Oct. 14 Grandparent's Day
- Oct. 16 Foundation Banquet
- Oct. 16 Foundation Board Meeting
- Oct. 16, 17 Board of Trustees Meeting
- Nov. 2 Sunday Night Live!, 5-7 pm
- Nov. 26-28 Thanksgiving Break
- Dec. 8-12 Final Exams

SEMESTER BREAK

- Jan. 5-9 Early Spring Intensives
- Jan. 10, 11 New Student Orientation
- Jan. 12 Classes begin at 5 pm
- Jan. 18 Sunday Night Live!, 5-7 pm
- Jan. 19 MLK Day of Service
- Mar. 2-6 Spring Break
- Mar. 18-20 MACU Rally & Homecoming
- May 7 Foundation Board Meeting
- May 8 Board of Trustees Meeting
- May 8 Graduate Dinner
- May 9 Commencement



lations. Four teams translated the books of I and II Thessalonians into their mother tongues in five days. One other team, translating scriptures for the very first time, completed I Thessalonians.

In week four of MAST, John Luton conducted the consultant check for the five teams. The consultant check permitted collaboration among translation teams that led to further refinement of their translations. The translators finished the program and took their new translations back to their churches where they will invite others to read and provide additional feedback. 

Churches Sending Most Students

We are thankful for all congregations who encourage their young people to prepare for ministry, whether in the churches or in the marketplace. Thanks to the following congregations who sent the most students in 2013-2014:

SENDING 4 STUDENTS:

Towne South Church of Christ
Elizabeth City, NC

SENDING 3 STUDENTS:

Boulevard Christian Church
Essex, MD

Church of Christ at Mountain View
Winchester, VA

Great Bridge Church of Christ
Chesapeake, VA

Mount Lebanon Baptist Church
Elizabeth City, NC

Northampton Church of Christ
Hampton, VA

Open Door
Hertford, NC

Zion's Chapel Church of Christ
Roper, NC

SENDING 2 STUDENTS:

Azalea Garden Church of God
South Mills, NC

Christ's Church
Winterville, NC

Colonial Heights Church of Christ
Norfolk, VA

Forest Park Church
Elizabeth City, NC

Jarvisburg Church of Christ
Jarvisburg, NC

Maple Grove Christian Church
Jamesville, NC

New Hope Christian Fellowship
Elizabeth City, NC

New Life Providence
Chesapeake, VA

Newhope Church
Pittsboro, NC

Open Arms Christian Ministry
Edenton, NC

Scio Church of Christ
Belmont, NY

Is your congregation interested in hosting a Mid-Atlantic Day?

Contact Jenny Rowland, Institutional Advancement Secretary
at 252.334.2008 or jenny.rowland@macuniversity.edu

Top 25 Supporting Churches

We are thankful for all of our faithful supporters who help to underwrite the work of MACU every year. Thanks to the following congregations (listed alphabetically) who gave between \$5,115 and \$111,223 in 2013-2014:

Athens Chapel Church of Christ
Bath, NC

Avalon Church of Christ
Virginia Beach, VA

Berea Church of Christ
Jarrettsville, MD

Broad Creek Christian Church
New Bern, NC

Cherry Avenue Christian Church
Charlottesville, VA

Church of Christ at Manor Woods
Rockville, MD

Community Christian Church
Williamston, NC

First Christian Church
Roanoke Rapids, NC

First Christian Church Ministries
Kernersville, NC

First Church of Christ
Washington, NC

Horsepasture Christian Church
Ridgeway, VA

Jarvisburg Church of Christ
Jarvisburg, NC

Northampton Church of Christ
Hampton, VA

Pinedale Christian Church
Winston-Salem, NC

Pleasant Hill Christian Church
Gasburg, VA

Plymouth Church of Christ
Plymouth, NC

Reedwood Christian Church
Gloucester, VA

Reidsville Christian Church
Reidsville, NC

Rosemary Church of Christ
Washington, NC

Scuppernong Church of Christ
Creswell, NC

Stoneybrook Christian Church
Wilson, NC

Towne South Church of Christ
Elizabeth City, NC

West Park Church of Christ
Portsmouth, VA

West Side Christian Church
Springfield, IL

Zion's Chapel Church of Christ
Roper, NC

Save The Date!



Senior Saints from Philippi Church of Christ in Creswell, NC, at a previous Seniors by Sea with a Hawaiian theme

Seniors by the Sea
JUNE 2

David Faust, Speaker

Tee Time For MACU Mustangs



2014 MEN'S GOLF TEAM. Front: Assistant Coach Roger Burns, Matt Cooper, Aaron Warwick, Head Coach Kendall Williams. Back: Chip Mabe, Adam Crawford. Inset: Zach Tanner.

FOR THE FIRST TIME MACU is fielding an intercollegiate men's golf team. Coach Kendall Williams (who is also "Papa" Kendall as he is dorm dad in Pearl A. Presley Hall) is leading the five-man team into new territory for MACU Athletics. Some players are relatively new to the game, but a couple were recruited to play at the college level. We are grateful to have them represent MACU on the course, on campus, and in our community.



Sept. 22 and 23 the men's golf team competed in their first official collegiate match at the Neuse Golf Club in Clayton, NC. Freshman Matt Cooper shot a final round of 74 and took home sixth place out of about 40 golfers.

THANKS TO OUR CORPORATE SPONSORS...

- Flowers Printing**
for providing so many of our printing needs
- Sweet Sign Designs**
for helping to provide signs for our athletic facilities
- Elite Hoops High Exposure Basketball Camp**
- Sugar Maple Interactive**
for being the presenting sponsor of our Mustang Athletics website
- Albemarle Propane**
for their ORANGE level sponsorship
- Albemarle Family YMCA**
A great new partnership with MACU and Mustang Athletics

Visit the SPONSORS page on the MACU website for more information on how your church or business can BACK THE HERD!



2014 LADY MUSTANGS VOLLEYBALL. Standing: Coach Paul Pipkin, Britney Walther, Jordan Cannon, Morgan Nayadley, Savanna Bannerman, Abby Gray, Ashley Brown, Lea Chapman, Team Manager Jessica Shellman. Kneeling: Rebecca Gaffney, Sarah Bowles, Paige Roberson, Jamie Brown.

Sneak Day

SENIORS LED STUDENTS OFF CAMPUS for a day of cancelled classes and fun as the MACU Family. The day started with devotions and worship, followed by breakfast and a drive to Williamsburg, VA, for a day at Busch Gardens.



Resident Assistants 2014-15

Joey Craft, Amy Isler, Brittany Harrison, Ariana Avila, Dustin McCrea.

Find us at www.gomacumustangs.com...

NEWS UPDATES • TEAM PAGES
SCHEDULES & SCORES

Join the MUSTANG NATION CLUB...

Register online, on paper, or in person.
Click the MUSTANG NATION CLUB icon on the MACU Athletics home page for details!



New Ministries & Service

Bobby Wallace '00, who has been Associate Minister at Plymouth, is now Senior Minister with Plymouth Church of Christ, Plymouth, NC.

Matt Dahmer '00 has begun his new duties as Senior Minister at Cape Fear Christian Church in Wilmington, NC, having served the church a number of years ministering to youth.

Zach Lister '02 has been called as evangelist for Cedar Grove Christian Church in Inwood, WV.

Andy Albea ex'04 is Children's Director and Sports Ministry Director for Galilee Christian Church in Jefferson, GA.

Daniel West '06 is now the Senior Minister for New Testament Christian Church in Roanoke Rapids, NC.

Glenn Crocker '07 has been called as Youth Minister for West Belhaven Church of Christ, Belhaven, NC.

Josh Nunez '11 and his wife, Viry, who have been ministering in Mexico, have been accepted to serve with IMPACTO Latino, a ministry of New Mission Systems International. They will be working in Pachuca and will be in the States early next year to raise support and build a partnership team.

Joshua Bondy '13 is the Discipleship Minister at Greensboro Christian Church, Greensboro, NC.

Ordinations

Senior Evan Tanner was ordained June 29 at his home congregation, Northampton Church of Christ, Hampton, VA. Dr. Ken Greene, Vice President for Student Services, preached.

Weddings

Chad Matta and Lori Tulloch ex'89, July 12

Chad Nichols and Kara Eure ex'09, July 12

Garrett Harrison and Taylor Pierce ex'14, Aug. 9

Steve Schauer and Claudette Smith '92, Aug. 29

Births

Zach '02 and Sayuri Poyner: Luki Jonah, July 15

Dave '06 and Amanda Herring: Elijah Lee, July 15

Alan '02 and Anne Presley: Ellen Jane, Aug. 5

Other News'n'Notes

Robin Rath Laubscher ex'98 recently was promoted to Executive Director with Thirty-One Gifts.

Plymouth Church of Christ in Plymouth, NC, honored **Bob '73** and **Denise ex'75 Moulden** on the occasion of Bob's retirement Sept. 7, with a dinner, program, and gifts. Bob ministered with the Plymouth congregation 35 years.

Amy Abbott Cain ex'99 was chosen Teacher of Excellence for Stokes County, NC. This award is given to one Stokes County Exceptional Children's Teacher each year. David Hicks, principal of Meadowbrook Academy in King, NC, where Amy teaches, nominated her. "She is a Master Teacher," said Hicks. "She does anything and everything to help her students."

Leaving a Legacy



Lawrence Kepler, 1923-2013

He was a member of what Tom Brokaw immortalized as "The Greatest Generation." He was a veteran of the United States Army (WW II, Normandy Invasion) and a veteran preacher of Christ. He lived a life of conviction and compassion, devoted to his Lord and his family. When he entered his eternal reward September 17, 2013, Lawrence Kepler left a legacy worthy of sharing.

His legacy did not involve many thousands or millions of dollars. But what it did involve is priceless.

Mr. Kepler was the father of Assistant Library Director Alice Andrews and father-in-law of adjunct professor Dr. Gene Andrews. His wife, Ida May; daughter, Alice; and granddaughter Lisa Andrews all attended MACU one semester. His son Bob earned a MACU certificate. His granddaughter Jenny studied several semesters before entering nursing school. His son-in-law Gene and grandson-in-law Matt earned four-year degrees from MACU. All are active in the Kingdom, some as vocational workers and some as volunteers. However, his ability to challenge and lead others into Kingdom work extended far beyond his family. Under his teaching and influence nearly a dozen, young and old, enrolled in Bible college.

Family members described him as humble, loyal, faithful, precise, a servant. For eternity the ripple effect of his faithful service will reap rewards. But he is gone now. Who will follow in Mr. Kepler's footsteps? Who will teach and serve and lead? Who will leave a living legacy like Lawrence Kepler's?

Mid-Atlantic Foundation News



Sandra Perkins, *Foundation Director*

WILGUS FUND: We love our Foundation donors. They make it possible for us to offer annual assistance to students attending the university. In December 2012, Gerald and Joan Wilgus started a new scholarship fund for students who are aspiring to be preachers. The Wilguses attend

Ocean View Church of Christ in Ocean View, DE, and Cornerstone Christian Church in Vero Beach, FL. They have seen quite a few young men turn into excellent preachers over the years. MACU has had many graduates come through her doors that have come from or have gone to Ocean View. Gerald and Joan love good Bible-based preaching and know the importance of helping young men prepare for ministry. We appreciate their continued support of spreading the word about Christ throughout the world. Thank you for the Gerald and Joan Wilgus Scholarship Fund.



Gerald and Joan Wilgus

PLEASE HELP US BUILD UP THE FOUNDATION. We ask you to join others who have chosen to make this important everlasting gift to help maintain the quality Christian education produced at Mid-Atlantic Christian University. Gifts to the Foundation are held in perpetuity. The funds are pooled and invested to create earnings that provide the annual awards for scholarships. To make a contribution to the Foundation simply mark your gift "Foundation." To start a new named fund contact Sandra Perkins, Foundation Director, by phone at 252-334-2003, or by email at sandra.perkins@macuniversity.edu. We have set a goal of \$10 million dollars by the year 2020.

FOUNDATION BANQUET: At the Foundation's annual banquet on October 16, student scholarship recipients will join the donors of named funds for a dinner on campus. We hear inspiring stories each year of how God has blessed the fund donors and how the students have been blessed to receive the scholarship dollars. We are pleased that Thompson Hospitality is providing the meal at no cost to us again this year.



GENERAL FUND

Ben and Peggy Allen (Honor)
by Richard Mansell

Lewis and Estelle Allen (Memory)
by Hilda Jones

Mandy Barefoot, Whitney Beville, Beth BonDurant, George W. BonDurant, Brent Bowen, Dustin Clary, Holton Clary, Maddie Clary, Makayla Clary, Arthur and Mae Jones, Jonathan Krantz, Katrina Krantz, Chris Paige, Jerry and Erlene Wright (Honor); Sarah BonDurant, Sterling Peebles Clary (Memory)
by David and Rebecca Jones

Gerald Dye (Memory)
by Gladys Myers-Dye

Troy Haight (Honor)
by Garrett and Melissa Lewis

Allen Herndon (Memory)
by Corinne Herndon

Mary Frances Isbell (Memory)
by Ken and Cindi Gunselman, M/M Rich Lindsey, Oak Grove Christian Church, Tyronne and Rose Spellman

Bob Moulden and Ronnie Woolard (Honor)
by Eric and Kelly Woolard

John D. Winn (Memory)
by Ronald Anglin

Aubrey and Polly Winslow (Memory)
by Mary Ann Foster

Ronnie Woolard (Honor)
by Marion and Druscilla Ennis

FOUNDATION

Carolyn Allen (Memory)
by Robert Allen

Robert Allen (Honor)
by D/M Ken Greene

Ottis and Ruby Bennett, John West (Memory)
by Jean Higginbotham

Al Blanton (Memory)
by Time Investment Corporation

Beth BonDurant, George BonDurant, M/M David Brothers, M/M Ethan Coltrain, M/M Paul Davis, M/M Taylor Everett, Ezekiel Fish, M/M Ben Fredericksen, M/M Chris Garrett, M/M Richard Hamilton, Jerry Harrell, Rachel Hayes, M/M Jared Hedges, M/M Carlton Himelwright, M/M Tim Hunt, Kurt Juergens, Tim Krugman, Sue Lamp, M/M Glenn McGinnis, M/M Ron Nickelson, M/M James Packe, M/M Clay Perkins, M/M Paul Pipkin, M/M Robert Reese, Joey Schools, Amanda Steiner, M/M Nishant Walter (Honor); Earl Brickhouse, Bill and Mary Hellen Claus, Molly Krugman (Memory)
by Rich and Cheryl Lindsley

George BonDurant (Honor); Sarah BonDurant (Memory)
by Fred Pressley

Vickie Cox (Memory)
by Gene and Alice Andrews

M/M Dennis Crehan (Honor)
by Dorlas Riley

WILL YOU REMEMBER MID-ATLANTIC in your estate plan?

Find out how easy it is to leave a legacy.

Contact Assistant Vice President for Development Emmett Murphy at emmett.murphy@macuniversity.edu or 757.872.7357.

Florence Fritz and Margaret Flint (Memory)
by Denis Fritz, Martin Fritz

Jake Griffin, John and Lucille Griffin, John and Janie Swindell (Memory)
by M/M William Griffin

Jackie Jarvis, David Jones, Jennifer A. Lehman, Jack Miller, D. Q. Roberts, Guy Whitley (Memory); Ronnie Woolard (Honor)
by D/M Clay Perkins

Alice Lease (Memory)
by Beth BonDurant, Financial Security Group, Charles Gunning, M/M Arthur Lease, Cindy Lease, M/M Dan Lease, M/M Ray Murphy, M/M Wayne Murphy, M/M William Linebaugh, M/M Garrett Lewis, M/M Thomas McConchie, M/M Ken Meade, M/M George Mills, M/M Emmett Murphy, Buddy and Beth Owens, M/M Ansel Peer, M/M Ben Penuel, David Prasch, M/M Nickey Rigdon, Jerelene M. Richards, Towne South Church of Christ

Rich and Cheryl Lindsley (Honor)
by Katharina Taylor

Frances Mills (Memory)

Lewis Mills (Honor)
by Jerelene M. Richards

Bob Moulden (Honor)
by Cabin Swamp Church of Christ, William and Victoria Cuthrell

Jennifer Norris Russell (Honor)
by Jerry Norris

Donna Scott (Memory)
by Christian Chapel Church of Christ

J.T. and Addie Segroves (Memory)
by Jaranell Fritts, Jonita Shoaff

Harley "Tom" Wood (Memory)
by Ruth Wood

LIBRARY

Robert Street (Memory)
Kirby Wynn (Memory)
by Greg Sexton

MATCHING GIFTS

Abbott Laboratories Fund
for Jean W. Bennett

Dominion Foundation
for Jerry Norris

Eaton Corporation
for Charlene A. Richards

Norfolk Southern Foundation
for Donna D. Fisher

Wells Fargo
for Danette McCracken

Mid-Atlantic Society

289 members

Goal: 500 members

Become a member by giving only \$3 a day (\$1,000 a year)

Contact Jenny Rowland, Institutional Advancement Secretary 252-334-2008 or jenny.rowland@macuniversity.edu



UPDATE:



Goal:

\$600,000
by May 30, 2015

Commitments:
\$304,830

RECEIVED:
\$337,082

Help us build our global classroom by visiting:

www.macuniversity.edu/partnering-with-macu/global-classroom-campaign

Mid-Atlantic
CHRISTIAN UNIVERSITY
715 N. POINDEXTER ST.
ELIZABETH CITY, NC 27909
ADDRESS SERVICE REQUESTED

Non-Profit Org.
U.S. Postage
PAID
Newport News, VA
Permit No. 7982

THE MESSENGER is published quarterly by Mid-Atlantic Christian University | 715 N. Poindexter St. | Elizabeth City, NC 27909 | Ph: 252-334-2000 | Fax: 252-334-2071
E-mail: melissa.lewis@macuniversity.edu | Editors: John Maurice and Melissa Lewis | www.macuniversity.edu | (USPS 467-260)

Mid-Atlantic Christian University is accredited by the Southern Association of Colleges and Schools Commission on Colleges to award certificates and associate and baccalaureate degrees.
Contact the Commission on Colleges at 1866 Southern Lane, Decatur, Georgia 30033-4097 or call 404-679-4500 for questions about the accreditation of Mid-Atlantic Christian University.

67TH ANNUAL
**MACU RALLY
& HOMECOMING**
Church Planting & Reaching The Unchurched
March 18-20, 2015

JIM TUNE
President, 2015 ICOM

DAVE MCCANTS '91
Church Planter, New Bern, NC

SARAH LYNN LEWIS GRUBB EX'99
Music and Worship, Simi Valley, CA

Grandparent's Day • October 14

9:30 a.m. Chapel <i>Phillip Alligood preaching</i>	10:30 a.m. Meet & Greet <i>Meet the MACU faculty</i>	Noon Lunch <i>Followed by campus tours</i>
--	--	--

FOR MORE INFORMATION, call Jenny Rowland at 252.334.2008

**VISIT US AT
ICOM 2014**



**NOVEMBER 13-16
COLUMBUS, OHIO**
Booth #153 & 155 S

